

Autumn 2010



## Charity and Community Involvement

This year we have implemented a tenant advisory committee for charity and community involvement. Our mission statement is "The Community and Charity Involvement Tenant Advisory Committee are committed to sharing fundraising ideas, working towards common fundraising goals, increasing building awareness of local community events and charities and broadening the donating population for each fundraising initiative."

Together with the committee, we coordinated a very successful Spring Food Drive for the Veteran's Food Bank. We hosted the "Beat Cancer to the Core" fundraising event in the Livingston Plaza. Total donations for this event exceeded \$50,000 helping to make this the single largest amount raised in Alberta and the Northwest Territories, for the Canadian Cancer Society. We also raised close to \$800 for the United Way of Cal-

gary through our Livingston Place Mini-Golf Event. During the Annual Stampede Party, we were able to raise just under \$1000 for Connections Counselling (even in the cold and rain!) Thank you to everyone for your support and donations to these worthy causes!

We will be holding a Holiday Food Drive again this year. More details will be provided in the coming weeks.



Head Shave for Canadian Cancer Society



Red Cross Blood Donor Clinic



Mini - Golf tournament for United Way

## Environmental News - Forever Green Program

Livingston Place participated in Waste Reduction Week from October 18-24 by hosting a Jacket Racket drive and a Recycling Roundup. We donated 30 bags of winter clothing to Jacket Racket and had a great turnout for the recycling roundup. Congratulations to Vicky Vo with Mercer Canada on winning the Future Shop Gift Card!

We also want to thank everyone that participated in the Recycling Survey that we sent out earlier this year. We received a lot of great feedback and will be implementing some of the ideas that were suggested throughout the next few months.

A recent waste audit completed at the building revealed far too much paper is ending up in the garbage. Please use the paper recycling boxes in your office to reduce the amount of paper going to the landfill – every piece counts! If you require any additional bins, either desk side or large, central bins, please contact Charlene Sobremonte, Tenant Services Manager, at 403-303-2414.

Another effort to reduce paper in the landfill, is to implement a paper towel recycling program. Over the next 4 months, we will be adding additional

bins to each washroom to collect clean paper towels that can be recycled. More information on this new program will be communicated in the coming months.

Livingston Place has applied for LEED EBOM (Existing Building Operations & Maintenance), targeting Gold certification. The LEED for Existing Buildings Rating System helps building owners and operators measure operations, improvements and maintenance on a consistent scale, with the goal of maximizing operational efficiency while minimizing environmental

impacts. LEED for Existing Buildings addresses whole-building cleaning and maintenance issues (including chemical use), recycling programs, exterior maintenance programs, and systems upgrades. The application and monitoring process takes approximately one year to complete.

For more information on LEED Canada ratings systems, visit [www.cagbc.org](http://www.cagbc.org).

## Livingston Club Fitness Centre

With the return of fall and winter, we are lucky to welcome everybody back to the gym. September and October were busy months with Member Appreciation Month, which involved many draws and incentives for all users of the centre. On Oct 5 Bentall and Health Systems Group hosted a Health and Wellness Fair. Those that dropped by were able to talk and learn from a number of varied exhibitors and presenters on a vast array of health and wellness topics.

We would also like to thank all members and non-members who participated in the Fitness Centre Service Survey. Based on your feedback we have already made some changes to the class schedule, and adjustments to

some of the amenities offered. Unfortunately we are unable to increase the amount of equipment in the facility, primarily due to space limitations. Options are available for the majority of movements, please consult any of the fitness staff for exercise alternatives. Your feedback is always appreciated to help us continue to meet your needs and ensure the highest level of service is provided.

As things get busier in the fall and again in the New Year we would like to remind everyone of some common etiquette. Please use the cardio sign up and be mindful of the time limits. Remember that this is a shared facility, allow others to work in between sets,

share benches, and other equipment with your neighbors. Finally, the Centre requires clean, dry runners to be worn in the facility, if you are running or walking outside in wet or muddy conditions please clean or leave your shoes at the front door. If you plan to workout after your run, it may require a second pair of shoes.

Looking ahead we have a number of events and dates to highlight:

**Dec. 6th:** Registration for January/February classes begin at 7:00am;  
**Dec. 20th to 22nd:** Yoga Workshop, Yin Intensive;  
**Dec. 23rd:** Yuletide Yoga, a drop in class by donation with

proceeds supporting the Veteran's Food Bank;  
**Dec. 24th:** 5:00am - 6:00pm;  
**Dec. 25th:** closed;  
**Dec. 26th thru to Jan. 2nd:** open 6:00am until 4:00pm;  
**Jan 10th:** Winter classes begin.

Returning in the New Year, Street Sense Self Defense class sponsored by Bentall. Further information coming soon.

For additional information on the Fitness Centre, including personal training and registered classes please refer to the website at [www.livingstonfitness@bentall.com](http://www.livingstonfitness@bentall.com) or contact Curtiss Matson or Ross Williams at 403-716-2007.

## Jamieson Place Winter Garden



Just steps away from Livingston Place, on the corner of 4<sup>th</sup> Avenue and 2<sup>nd</sup> Street, Jamieson Place offers a unique Winter Garden on the +15 level that we are happy to share with the public. The inspiration for the Winter garden is the prairie landscape. Floor patterns make reference to the “patchwork” qualities of the farmland as seen from satellite images. Raised planters are minimized to promote interesting walking pathways and hidden gems in which to sit and relax. “Living room” areas with leather couches

and coffee tables are scattered throughout the Garden. There is plenty of natural light as the Garden is enveloped by floor to ceiling windows and clear glazing skylights that soften afternoon sun, but promote a large amount of indirect natural light. The plants that are placed throughout the Garden, especially the filigree effect of the Bamboo, promotes high level of visibility and lightness. As you walk through the garden, you will find some added features including the grouping of three chandelier style Dale

Chihuly blown glass sculptures that hang over the Infinity Pool, located in the centre of the Garden. A Green Wall, the first of its kind in Western Canada, made up of over 20,000 living plants located on the west wall of the Garden and a Field of Fame, which includes a group of steel “sheaves of wheat” that pay tribute to Alberta Champions.

Make your way over to take a look – it really is spectacular!

## BP Centre Food Court

Renovations on the +15 of BP Centre are complete and the choices at the new food court are growing. Tim Horton’s, Jugo Juice, Quizno’s, Thai Express and Wok Box are all now open for business!

The food court renovation included an expanded seating area and introduction of new food service vendors.

Watch for additional information on the vendors opening in early 2011.

## Livingston Place Parkade

We have completed a number of upgrades to the Livingston Place Parkade over the past year. We have installed a second exit lane, a parking guidance system, illuminated exterior parking signage and dedicated motorcycle parking stalls. All of these projects have increased the efficiency and daily use of the parkade.

We thank you for your patience and cooperation while these projects were implemented.

Parking Information - Lot 317

Random Monthly: \$500 + tax  
Reserved Monthly: \$580 + tax

Daily Max: \$33.50 (includes tax)

Hourly: first hour or less: \$10.00,  
each 30 minutes after: \$5.00

Evening/Weekend/Holiday: \$5.00

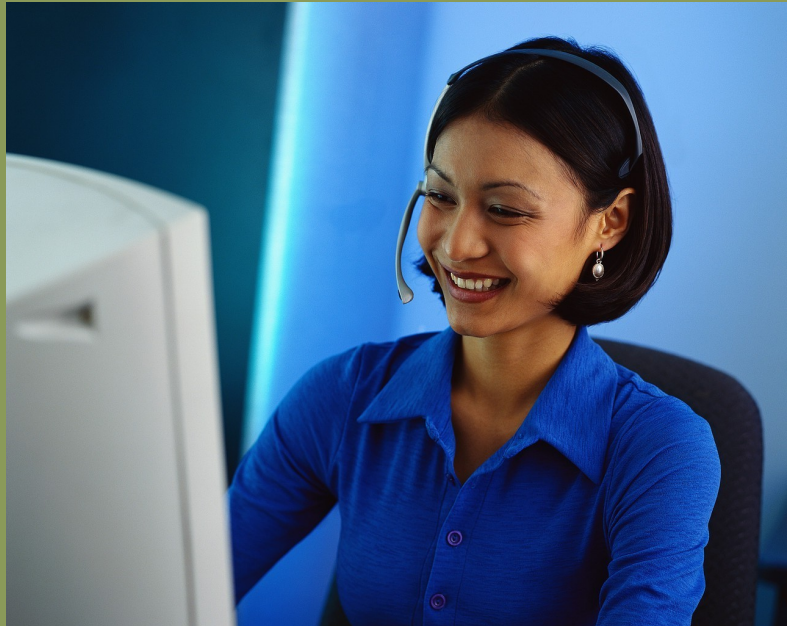
Please contact Impark for monthly Parking Sign Up at [www.impark.com](http://www.impark.com) or 1-877-909-6199.



# ClikFIX...

## Bentall's Tenant Service Contact Centre

- Lighting & Electrical
- Security • Plumbing
- Heating & Air Conditioning
  - Fire & Life Safety
- Housekeeping • Parking
- Construction • Recycling
  - Shipping & Receiving
  - Landscaping
  - Moves • Locks
- Repairs & Modifications
  - Leasing Inquiries



*ClikFIX is Bentall's tenant service contact centre.*

*Designed to make it easy for you, ClikFIX provides a central resource for your service needs.*

*You can either phone, email, or simply "Clik" and log your service request online.*

*ClikFIX personnel are available 24 hours per day, 7 days a week to receive your request.*

*Placing a service request is easy with ClikFIX. Regardless of the size of your space or type of property you occupy, we are here to serve you.*

**Whether it's on-line, by phone, or email, ClikFIX can take care of all your service needs.**

**1-866-ClikFIX (254-5349)**

Web: [www.clikfix.com](http://www.clikfix.com) E-mail: [service@klikfix.com](mailto:service@klikfix.com)

Fax: (604) 661-5004

